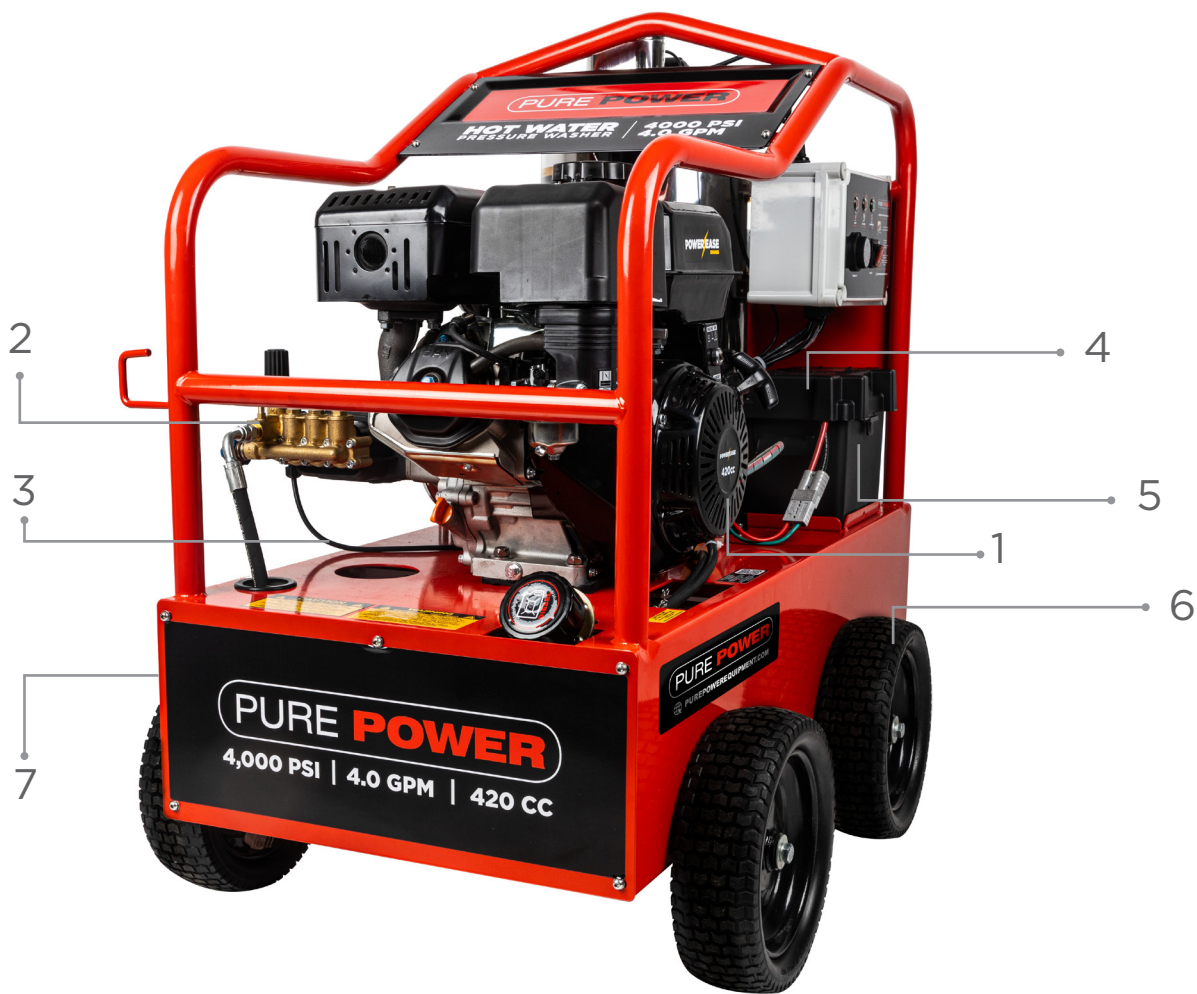


PURE **POWER**



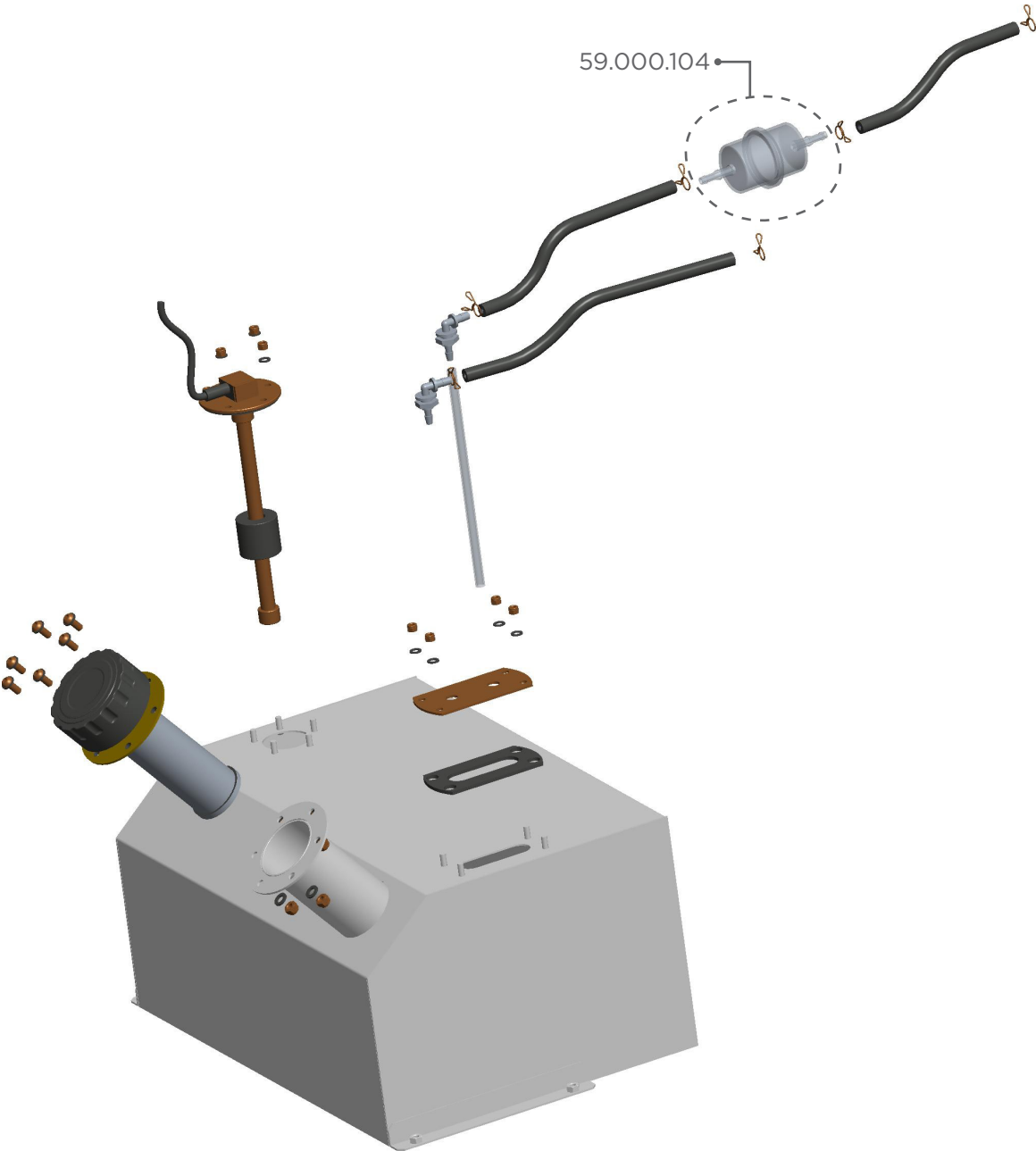
PPHW4015RA BREAKDOWN

PRESSURE WASHER ASSEMBLY



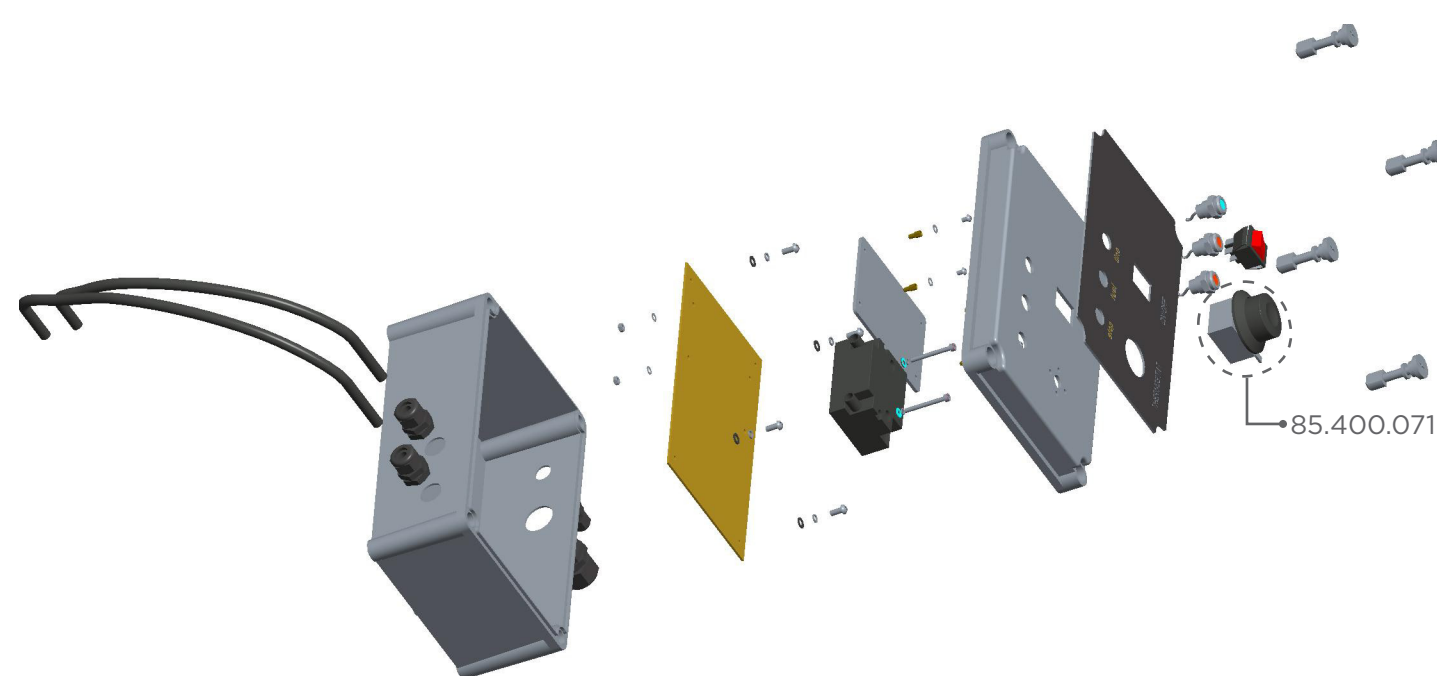
REFERENCE #	DESCRIPTION	QTY	BE PART NUMBER
1	ENGINE	1	85.578.150
2	PUMP	1	85.129.037B
3	PRESSURE SWITCH	1	85.300.082
4	BATTERY	1	85.603.000
5	BATTERY BOX	1	85.005.053
6	WHEELS	1	85.660.054BFP
7	BRAKE ASSEMBLY	1	85.604.104

DIESEL TANK ASSEMBLY



DESCRIPTION	QTY	PART NUMBER
DIESEL TANK ASSEMBLY	1	59.130.016
DIESEL FUEL FILTER	1	59.000.104

CONTROL BOX ASSEMBLY

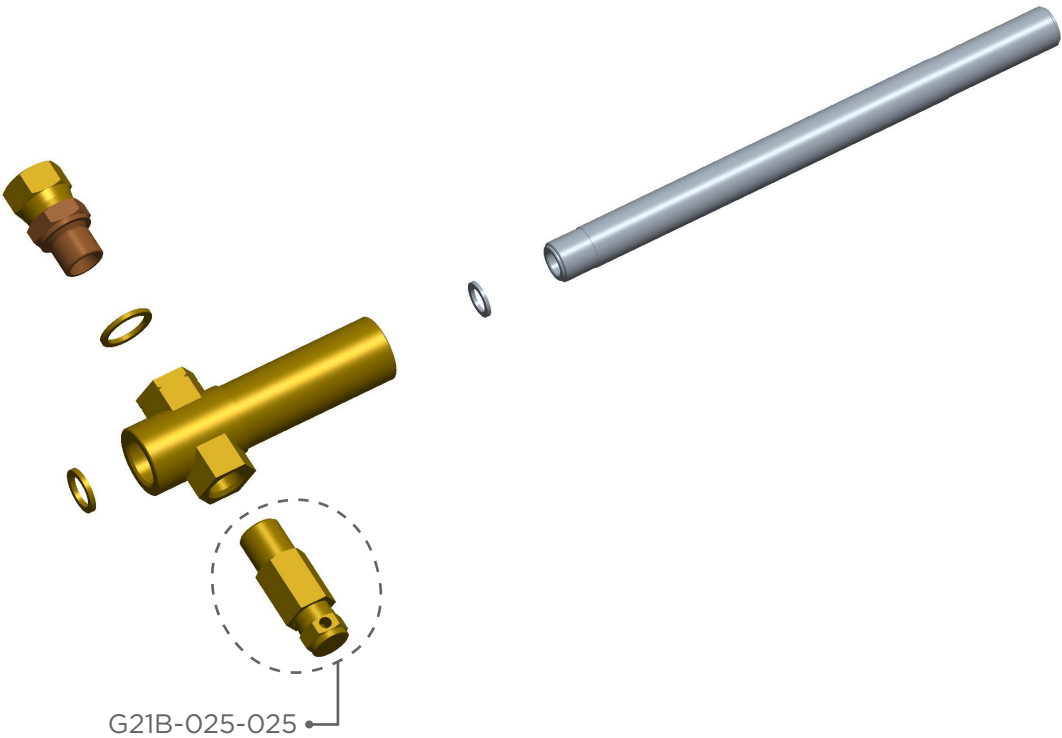


DESCRIPTION	QTY	PART NUMBER
CONTROL BOX ASSEMBLY	1	59.130.017
THERMOSTAT WITH INNER PROBE	1	85.400.071

Exploded view diagram of a motor assembly. The components shown include a fan, a large circular housing, a motor unit, and various internal parts like bearings, shafts, and bolts. A callout points to a specific part labeled G21B-O25-O25.

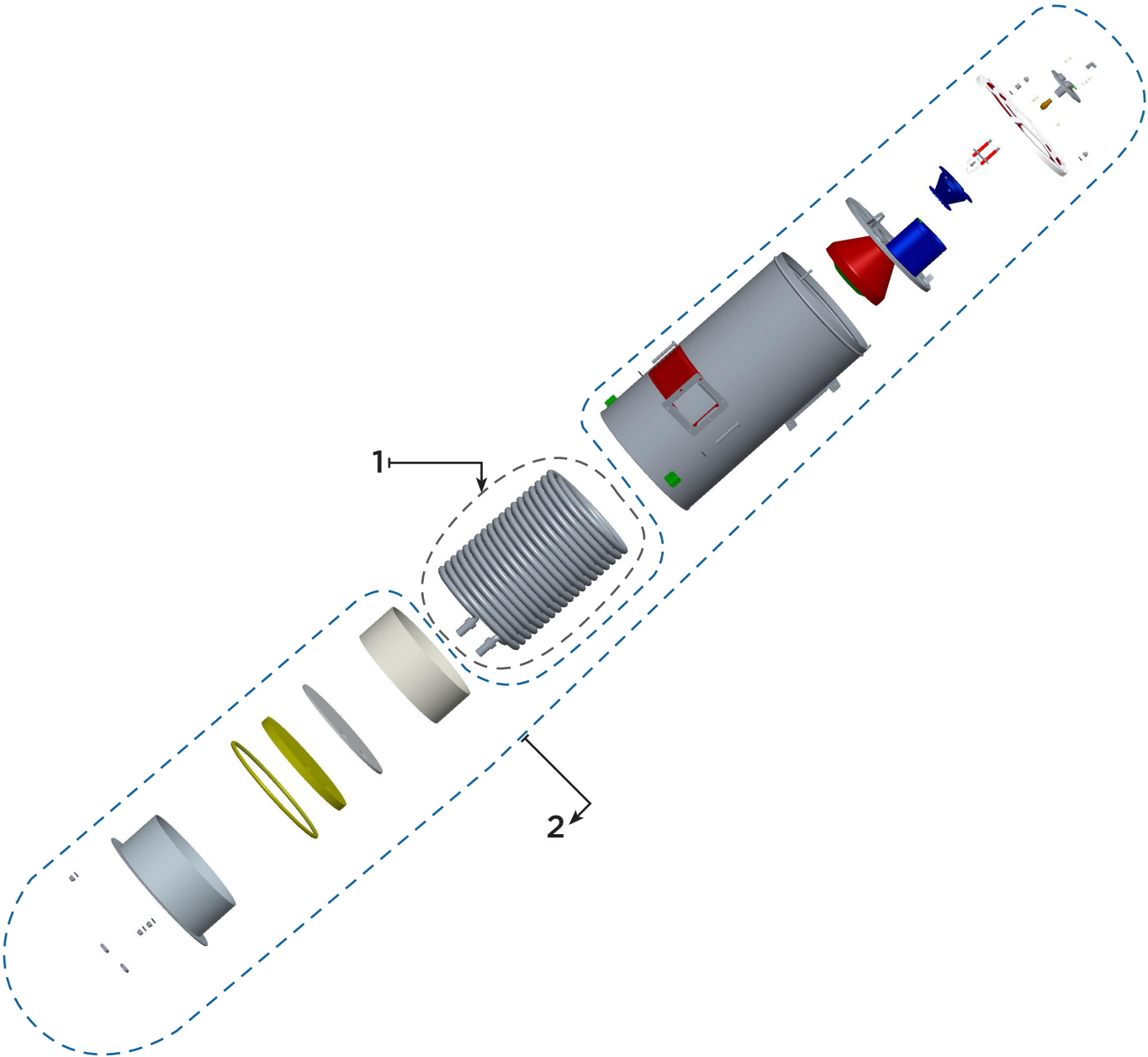
DESCRIPTION	QTY	PART NUMBER
TRANSMISSION ASSEMBLY	1	59.130.018
HOSE BARB 1/4" X 1/4" MNPT	1	G21B-025-025

THERMOSTAT MANIFOLD ASSEMBLY



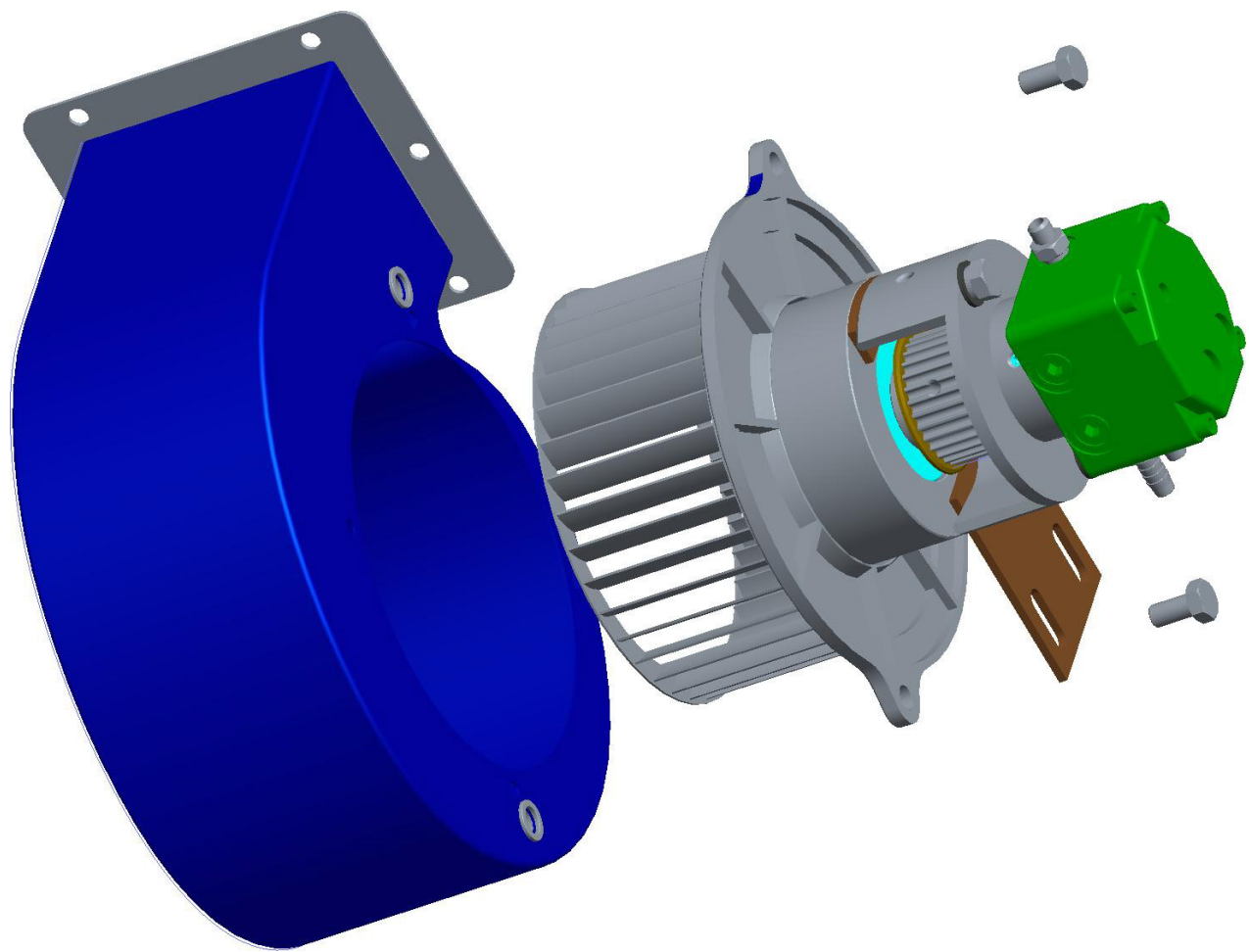
DESCRIPTION	QTY	PART NUMBER
THERMOSTAT MANIFOLD ASSEMBLY	1	59.130.019
RUPTURE DISC	1	59.000.101

COIL ASSEMBLY



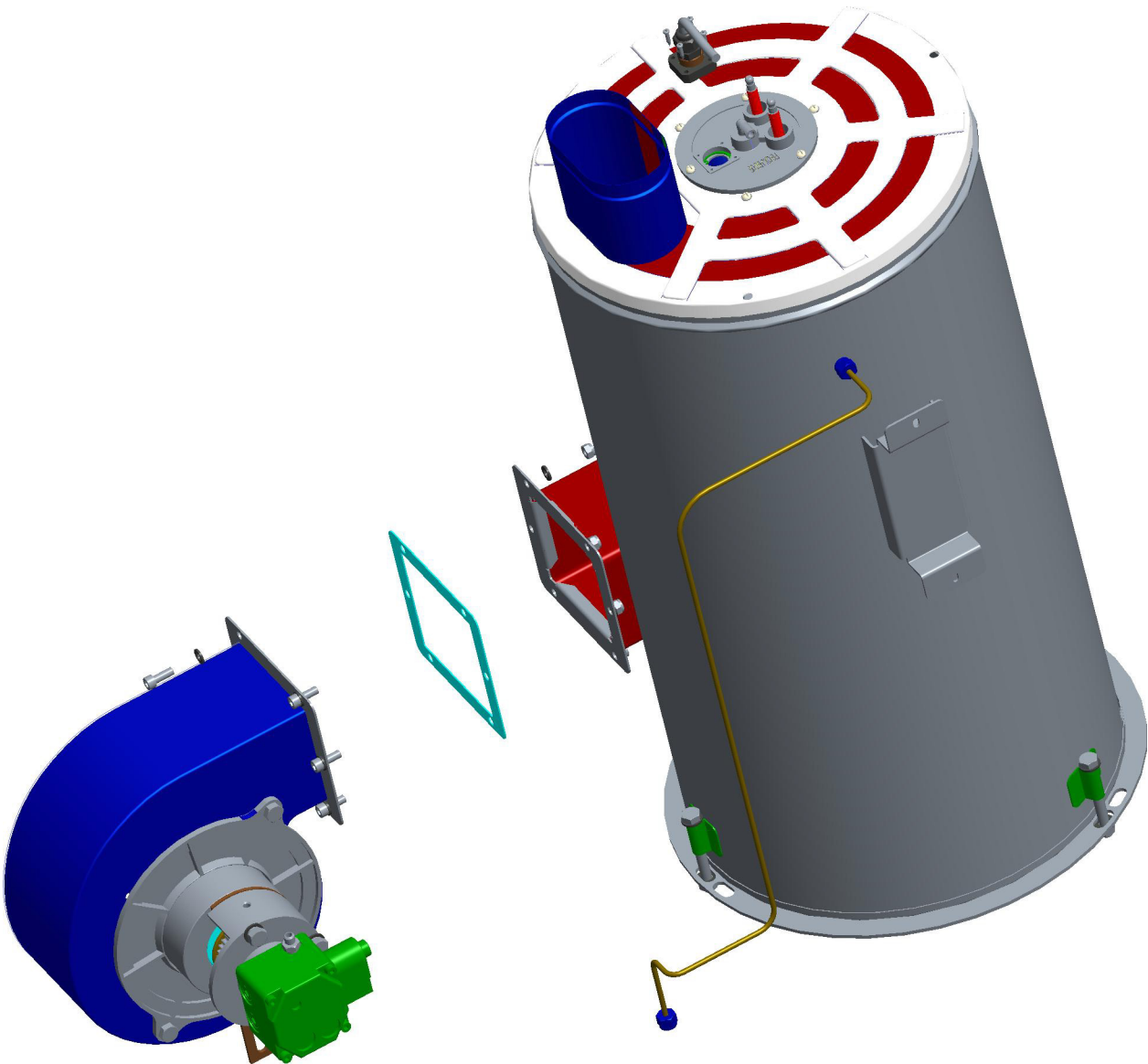
DESCRIPTION	QTY	PART NUMBER
BARE COIL	1	59.130.014
COIL SKIN ASSEMBLY	1	59.130.023

BURNER ASSEMBLY WITH FAN HOUSING



DESCRIPTION	QTY	PART NUMBER
BURNER ASSEMBLY WITH FAN HOUSING	1	59.130.021

COMPLETE BURNER + COIL ASSEMBLY



DESCRIPTION	QTY	PART NUMBER
COMPLETE BURNER + COIL ASSEMBLY	1	59.130.022